

Introduction to Computer Vision

Michael J. Black

Oct 2009

PCA and applications

Talk

Wed, October 14, 2009 12-1pm, 182 George St, Rm 110SIFT
Flow: Dense Scene Alignment and Its Applications

Ce Liu

In this talk I will introduce dense scene alignment and how it can be applied to a number of computer vision problems varying from satellite image registration to object recognition and scene parsing. ...

Goals

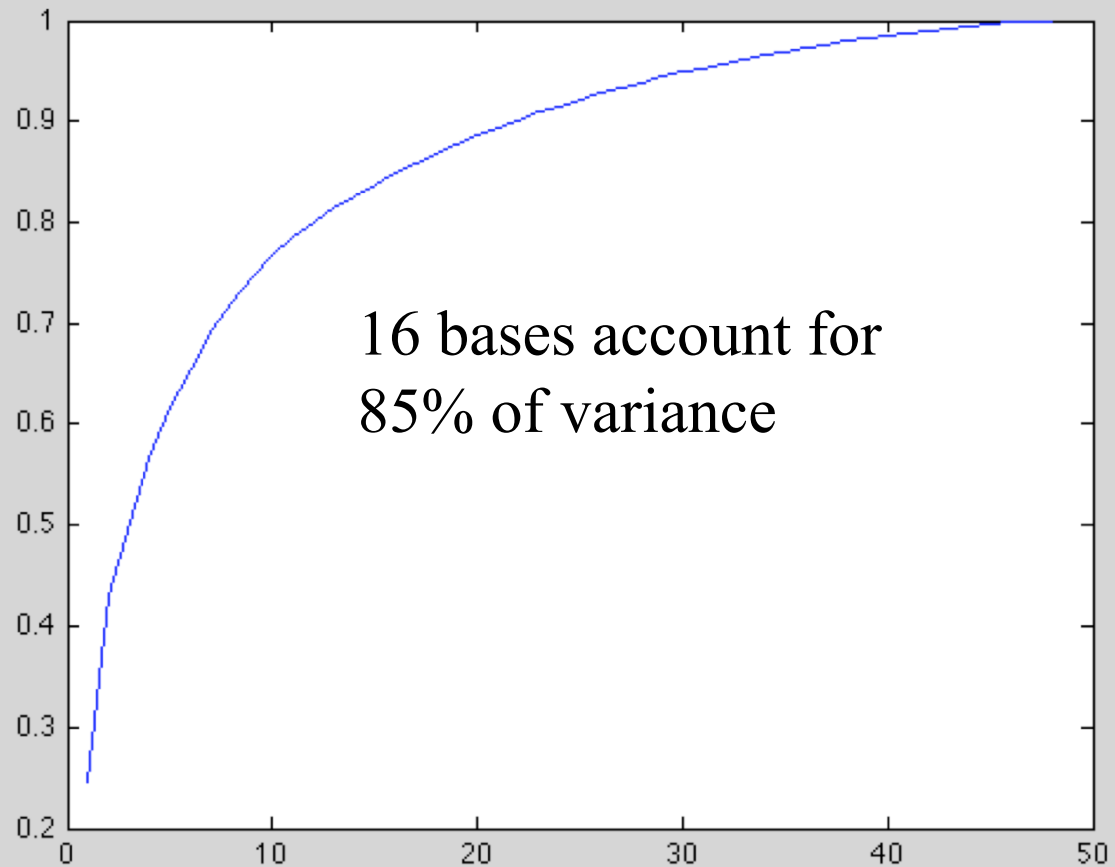
- Wed: Conclude PCA. Applications of PCA. Start probability and classification.
- Fri: probability and classification







Cumulative variance



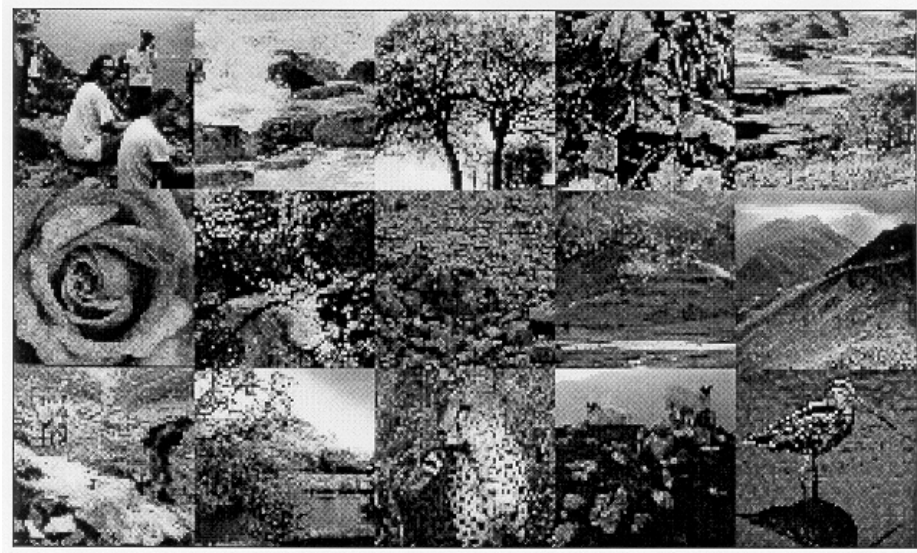


SVD



$$[U \ S \ V] = \text{svd}(A, 0);$$

Generic Image Ensembles



Fleet & Szeliski

CS143 Intro to Computer Vision

©Michael J. Black

Generic Image Ensembles



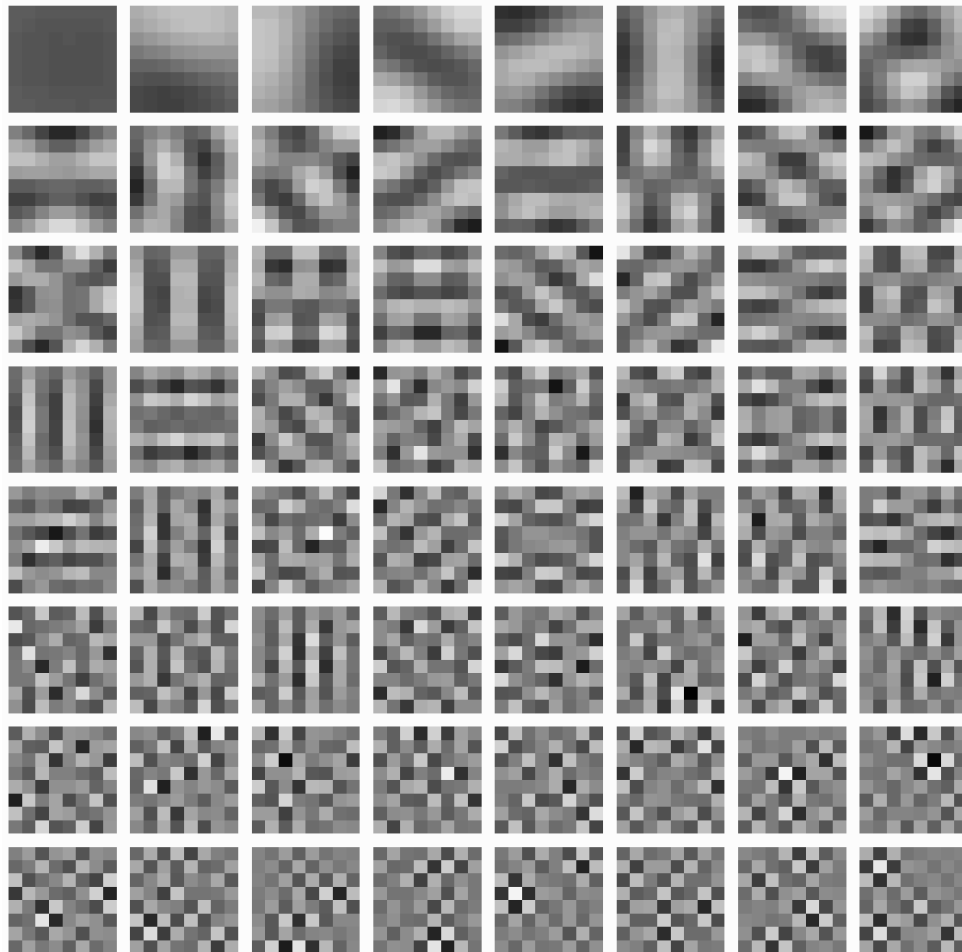
Is there a low dimensional model describing natural images?

Fleet & Szeliski

CS143 Intro to Computer Vision

©Michael J. Black

Natural Images



What do these bases look like?

8X8 image patches

Fleet & Szeliski

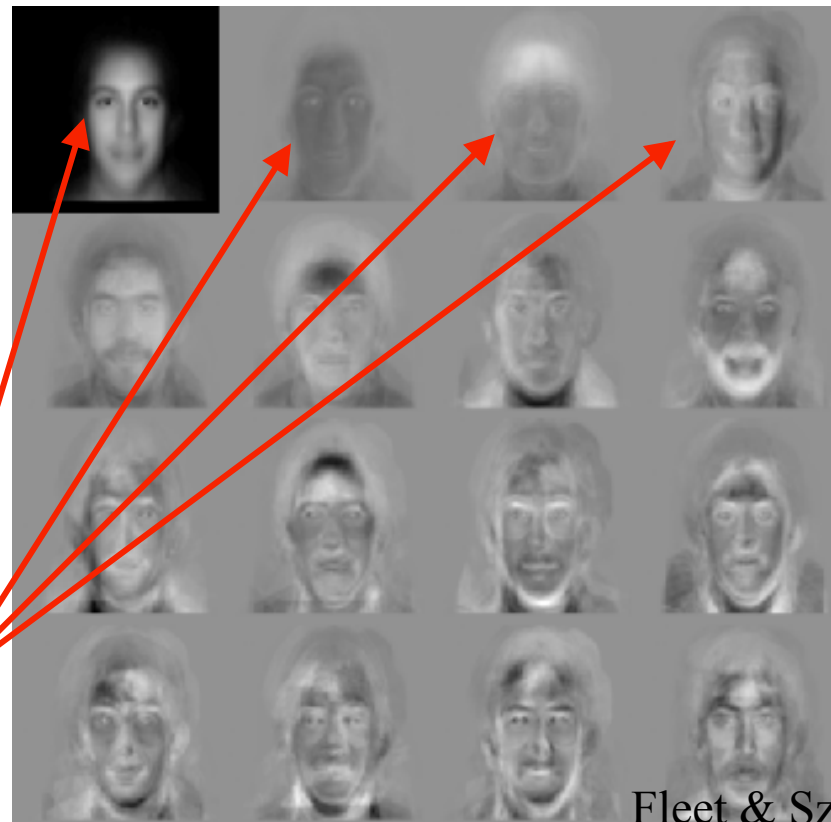
EigenFaces

First popular use of PCA for object recognition was for the detection and recognition of faces [Turk and Pentland, 1991]

- Collect a face ensemble
- Normalize for contrast, scale, & orientation.
- Remove backgrounds
- Apply PCA & choose the first N eigen-images that account for most of the variance of the data.

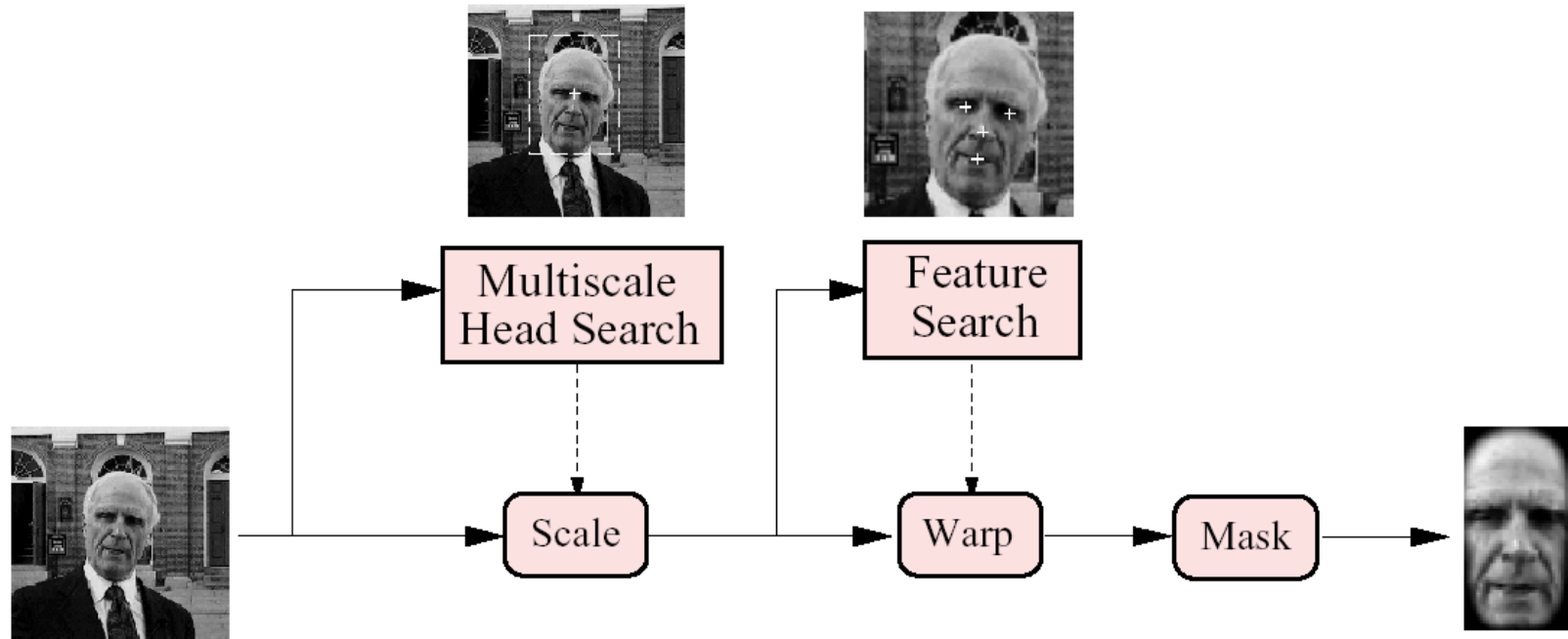
mean
face

lighting
variation



Fleet & Szeliski

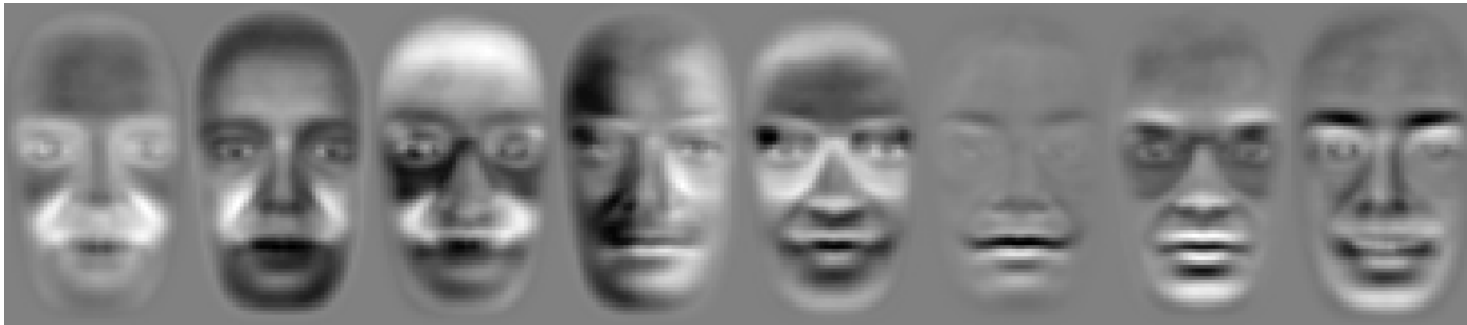
Face Recognition



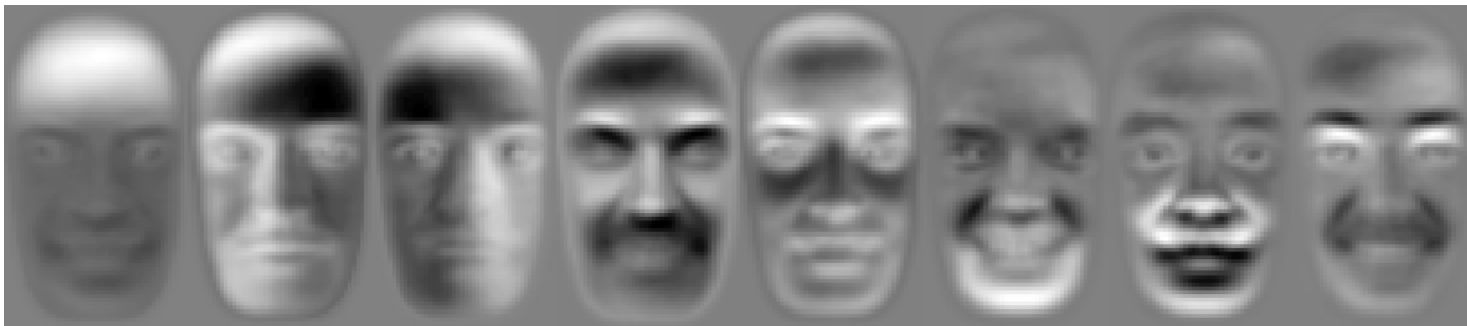
[Moghaddam, Jebara & Pentland, 2000]

Fleet & Szeliksi

Intra- & Extra-Personal Subspaces



Intra-personal subspace (variations in expression)



Extra-personal subspace (variation between people)

Fleet & Szeliski



Antonio Torralba & Aude Oliva (2002)

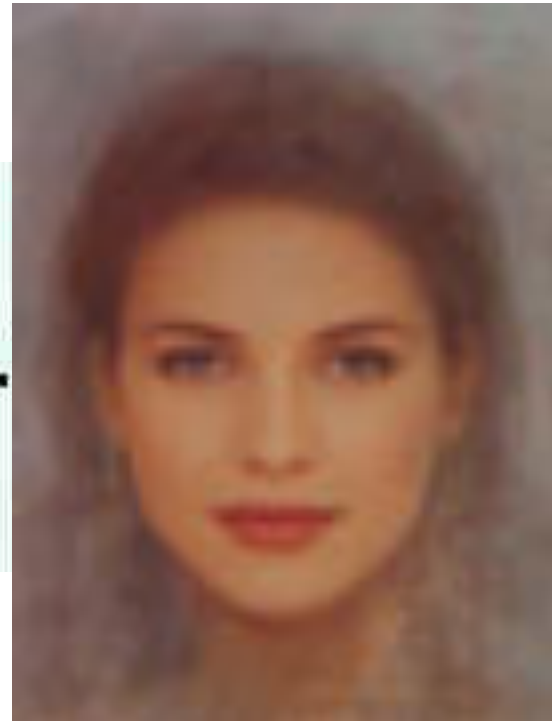
<http://web.mit.edu/torralba/www/gallery/gallery1.html>



Antonio Torralba & Aude Oliva (2002)

<http://web.mit.edu/torralba/www/gallery/gallery2.html>

Average fashion model



Average of 60 shape-aligned
fashion model faces

<http://perception.st-and.ac.uk//Prototyping/prototyping.htm>

Attractiveness

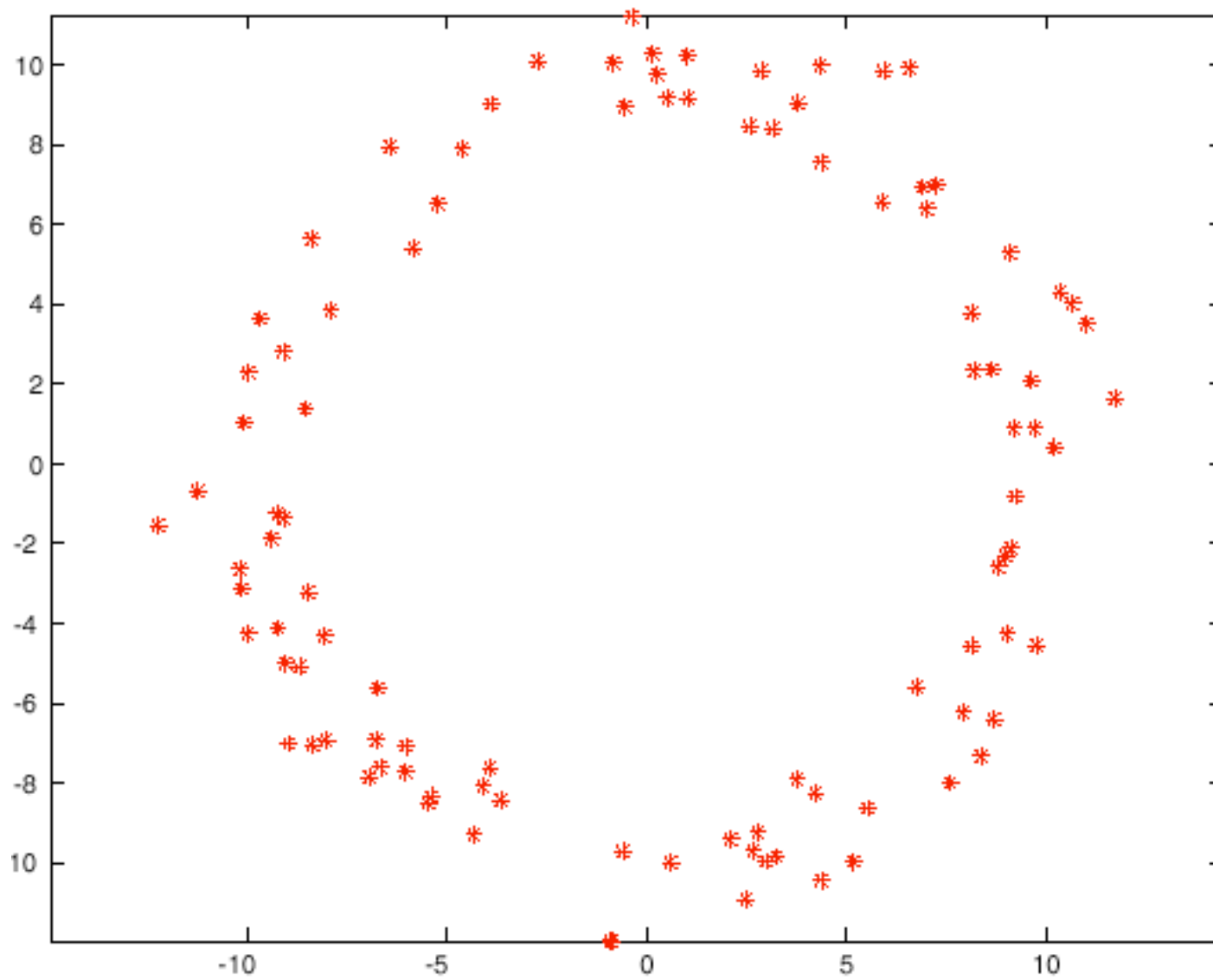


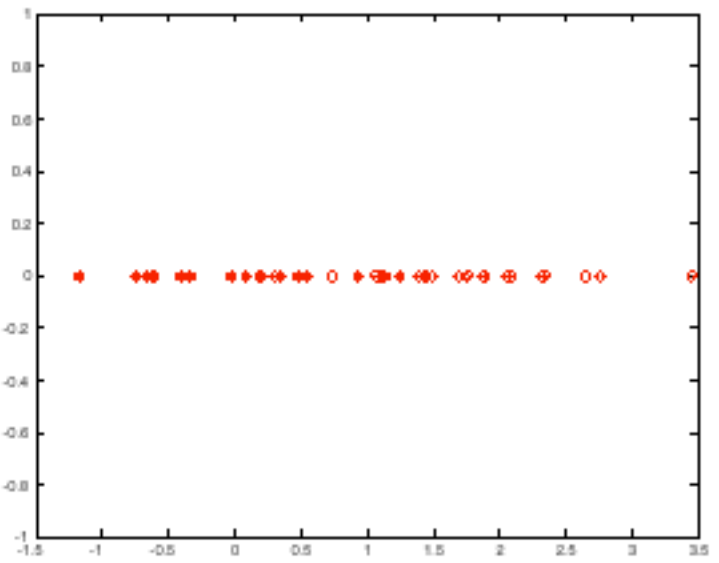
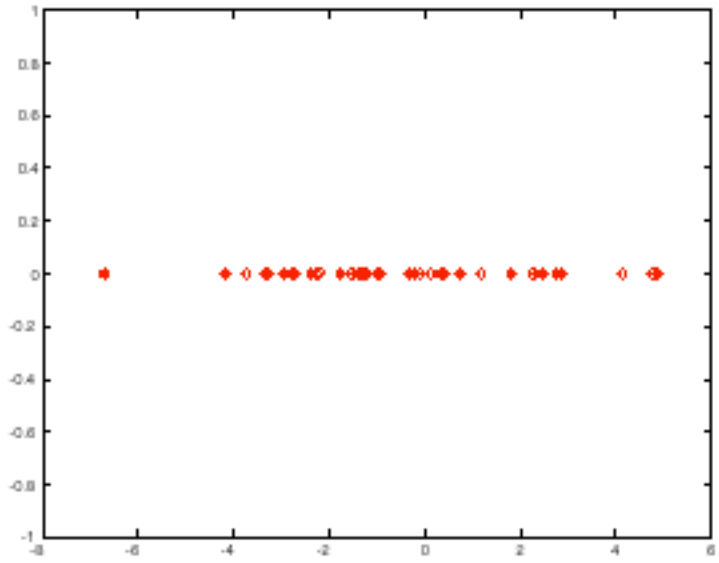
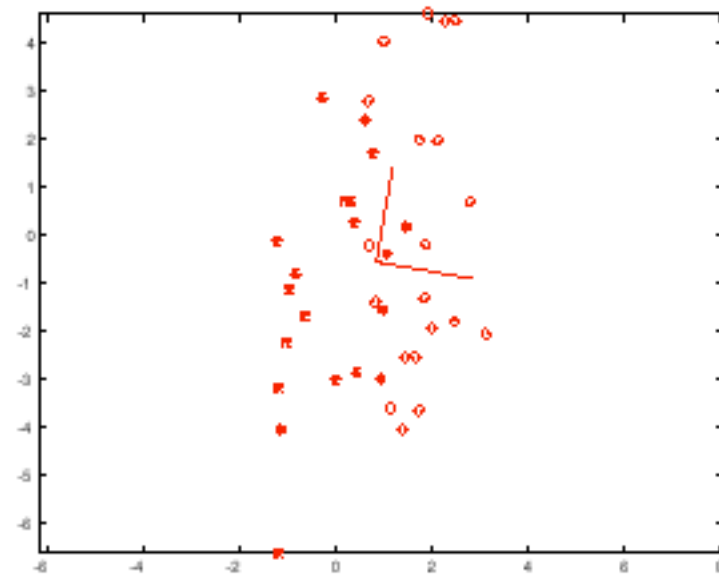
92% of the time people choose the average face as more attractive.

http://www.faceresearch.org/feedback/average_sym

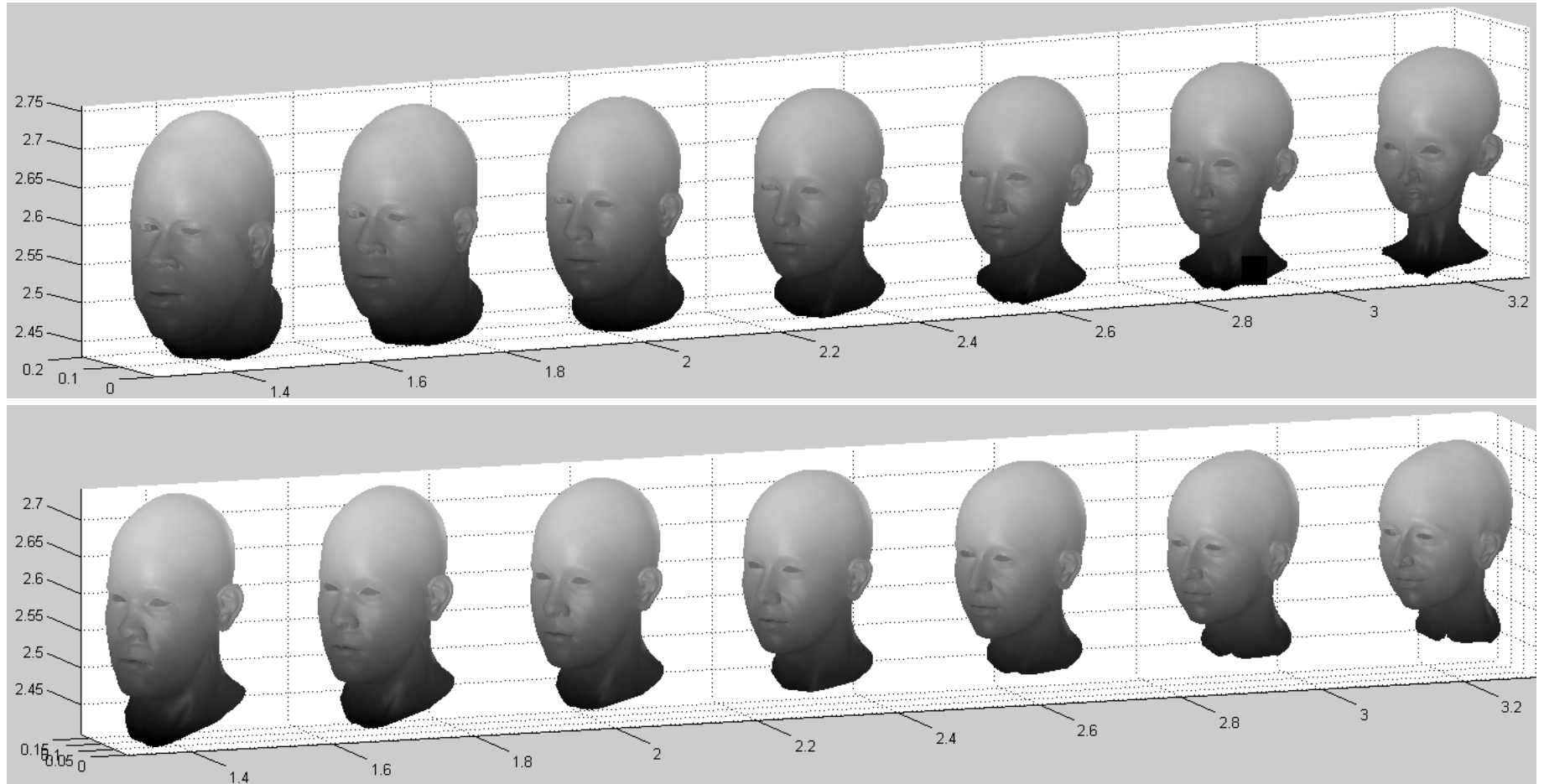
Difficulties with PCA

- Projection may suppress important detail
 - smallest variance directions may not be unimportant
- Method does not take discriminative task into account
 - typically, we wish to compute features that allow good discrimination
 - not the same as largest variance





Eigen Heads (PC 1&2)



Eigen Heads (PC 3&4)

